

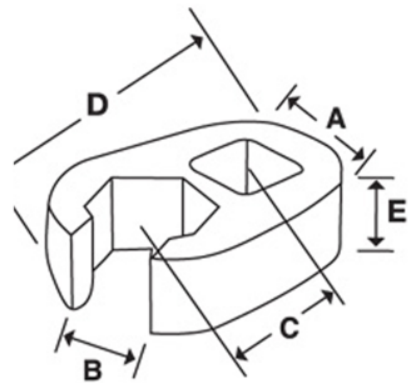


**JHWSCOE42**  
**1/2 Drive Open End Crowfoot**  
**Wrench, Satin Chrome Finish,**  
**1-5/16"**





**PRODUCT DETAILS**

- Crowfoot wrenches are professional quality, made of high grade steel
- Featuring an open end with a continuous arc for constant contact with the fastener for greater turning power without deforming the fastener



# PRODUCT ATTRIBUTES

Product: **JHWSCOE42**

	1/2 in		1-5/16 in	<b>A</b>	2-19/32 in
<b>C</b>	2 in	<b>E</b>	7/16 in	<b>F</b>	5/8 in
<b>D</b>	3.0625 in	<b>A</b>	2-5/32 in	<b>E</b>	15/16 in
<b>B</b>	1-5/32 in	<b>lb</b>	0.48 lb		