



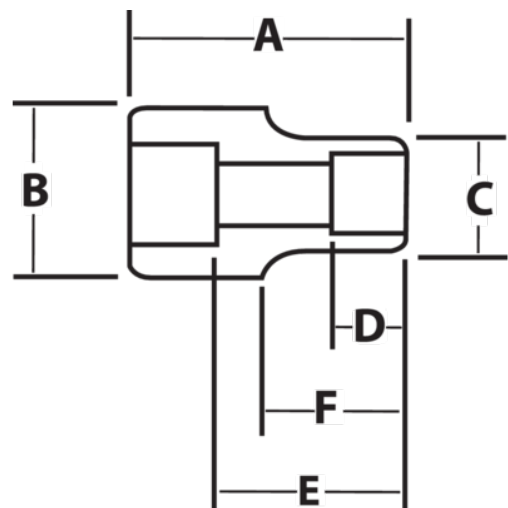
JHW14M-612

1/2" Drive Deep Impact Socket 6-Point 12 mm, Black Industrial Finish







PRODUCT DETAILS

- SUPERTORQUE™ lobular openings for greater turning power without deforming the fastener
- Designed for maximum engagement on 6 point fasteners
- Suitable for use with pneumatic and electric impact wrenches
- Specially heat treated for impact use to provide long life, safety, and durability



PRODUCT ATTRIBUTES

Product			A	B	C	D	E		F	
JHW14M-612	1/2 in	12 mm	3-1/4 in	29/32 in	49/64 in	23/64 in	2-9/16 in	7/16 in	23/64 in	0.27 lb