



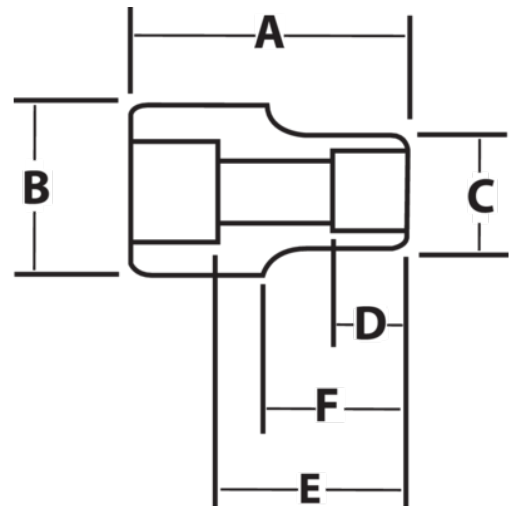
JHWHD-636

**3/4 Drive Deep Socket, High
Polished Chrome Finish, 6 Point,
1-1/8**



PRODUCT DETAILS

- SUPERTORQUE® lobular openings for greater turning power without deforming the fastener
- Designed for maximum engagement on 6 point fasteners



PRODUCT ATTRIBUTES

Product			A	B	C	D	E		F	
JHWHD-636	3/4 in	1-1/8 in	3-1/2 in	1-1/2 in	1-5/8 in	13/16 in	2-1/2 in	25/32 in	2-7/32 in	1.05 lb