



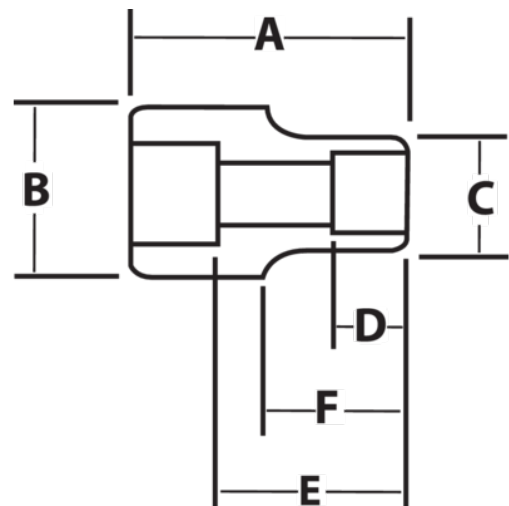
JHWHM-1222

**3/4 Drive Shallow Socket, High
Polished Chrome Finish, 12 Point
22 mm**







PRODUCT DETAILS

- SUPERTORQUE® lobular openings for greater turning power without deforming the fastener
- Designed for quick engagement on both 6 and 12 point fasteners



PRODUCT ATTRIBUTES

Product			A	B	C	D	E		F	
JHWHM-1222	3/4 in	22-mm	2 in	7/16 in	1-1/4 in	5/8 in	1-1/32 in	11/16 in	13/16 in	0.48 lb