



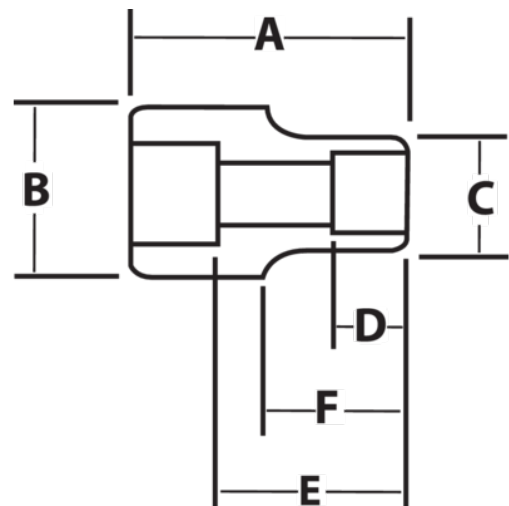
JHWHM-1227

**3/4 Drive Shallow Socket, High
Polished Chrome Finish, 12 Point,
27 mm**







PRODUCT DETAILS

- SUPERTORQUE® lobular openings for greater turning power without deforming the fastener
- Designed for quick engagement on both 6 and 12 point fasteners



PRODUCT ATTRIBUTES

Product			A	B	C	D	E		F	
JHWHM-1227	3/4 in	27-mm	2 in	1-1/2 in	1-9/16 in	3/4 in	1-1/32 in	1-1/16 in	11/16 in	0.55 lb