



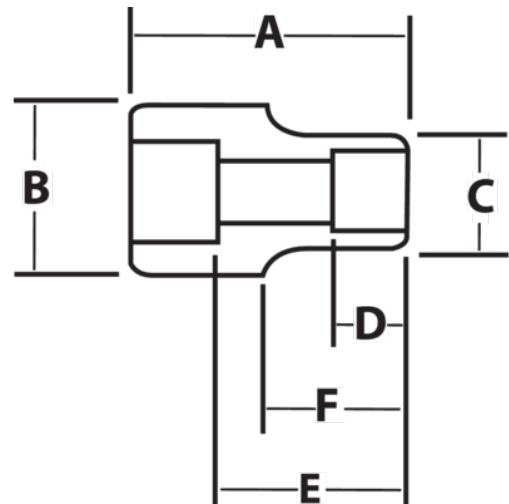
JHWHM-1232

**3/4 Drive Shallow Socket, High
Polished Chrome Finish, 12 Point,
32 mm**







PRODUCT DETAILS

- SUPERTORQUE® lobular openings for greater turning power without deforming the fastener
- Designed for quick engagement on both 6 and 12 point fasteners



PRODUCT ATTRIBUTES

Product			A	B	C	D	E		F	
JHWHM-1232	3/4 in	32-mm	2-1/4 in	1-1/2 in	1-3/4 in	7/8 in	1-5/16 in	1-5/16 in	7/8 in	0.84 lb