

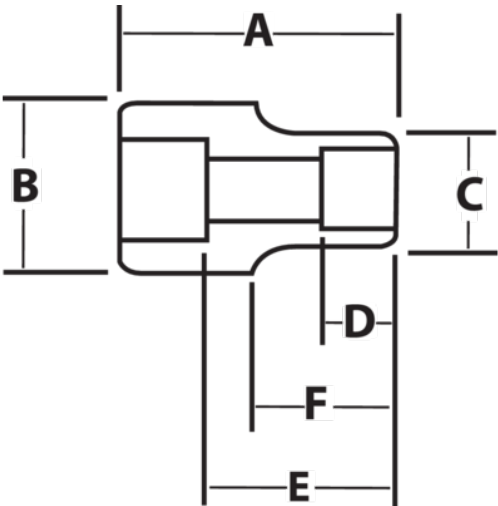


JHWHM-1241
3/4 Drive Shallow Socket, High
Polished Chrome Finish, 12 Point,
41 mm







PRODUCT DETAILS

- SUPERTORQUE® lobular openings for greater turning power without deforming the fastener
- Designed for quick engagement on both 6 and 12 point fasteners



PRODUCT ATTRIBUTES

Product			A	B	C	D	E		F	
JHWHM-1241	3/4 in	41-mm	2-5/8 in	1-3/4 in	2-3/16 in	1-1/16 in	1-23/32 in	1-13/32 in	1-3/16 in	1.16 lb