



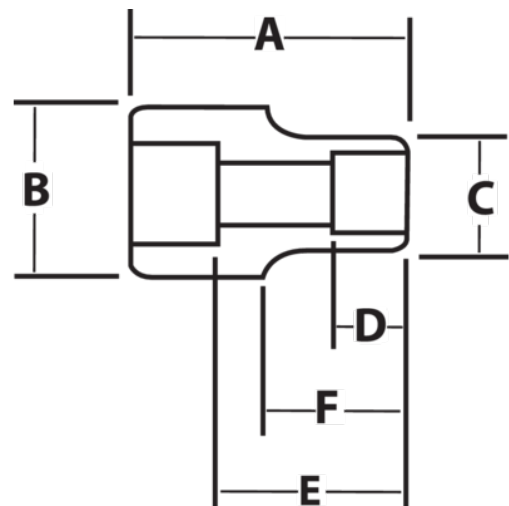
### JHWHM-1254

**3/4 Drive Shallow Socket, High  
Polished Chrome Finish, 12 Point,  
54 mm**







### PRODUCT DETAILS

- SUPERTORQUE® lobular openings for greater turning power without deforming the fastener
- Designed for quick engagement on both 6 and 12 point fasteners



### PRODUCT ATTRIBUTES

| Product    |  |  | A        | B        | C        | D          | E        |  | F          |  |
|------------|---|---|----------|----------|----------|------------|----------|---|------------|---|
| JHWHM-1254 | 3/4 in  | 54-mm   | 3-1/4 in | 1-3/4 in | 2-7/8 in | 1-15/32 in | 2-1/8 in | 1-13/32 in  | 1-21/32 in | 2.27 lb   |