



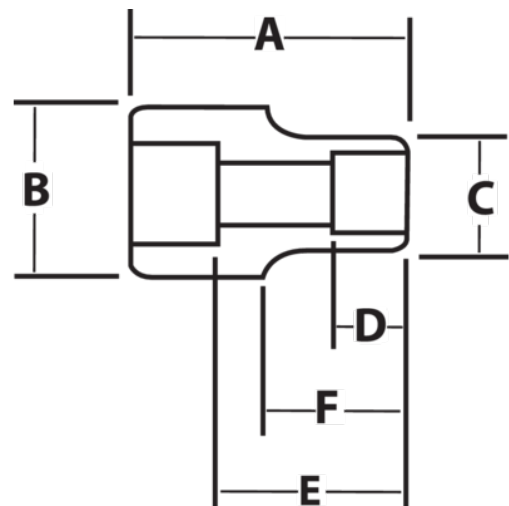
JHWHM-1260

**3/4 Drive Shallow Socket, High
Polished Chrome Finish, 12 Point,
60 mm**







PRODUCT DETAILS

- SUPERTORQUE® lobular openings for greater turning power without deforming the fastener
- Designed for quick engagement on both 6 and 12 point fasteners



PRODUCT ATTRIBUTES

| Product |  |  | A | B | C | D | E |  | F |  |
|-------------------|---|---|----------|----------|----------|----------|------------|---|----------|---|
| JHWHM-1260 | 3/4 in | 60-mm | 3-5/8 in | 1-3/4 in | 3-1/4 in | 1-3/4 in | 2-23/32 in | 1-3/4 in | 2-1/8 in | 3.52 lb |