



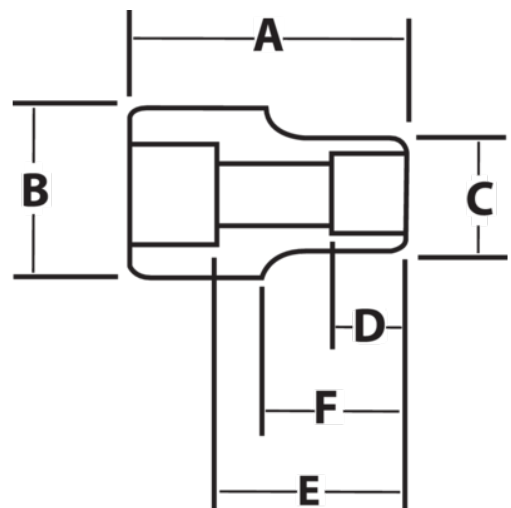
JHW16-642

3/4" Drive Deep Impact Socket 6-Point 1-5/16", Black Industrial Finish







PRODUCT DETAILS

- SUPERTORQUE® lobular openings for greater turning power without deforming the fastener
- Designed for maximum engagement on 6 point fasteners
- Suitable for use with pneumatic and electric impact wrenches
- Specially heat treated for impact use to provide long life, safety, and durability



PRODUCT ATTRIBUTES

Product			A	B	C	D	E		F	
JHW16-642	3/4 in	1-5/16 in	3-1/4 in	1-3/4 in	2 in	7/8 in	2-9/32 in	1-9/32 in	7/8 in	1.66 lb