



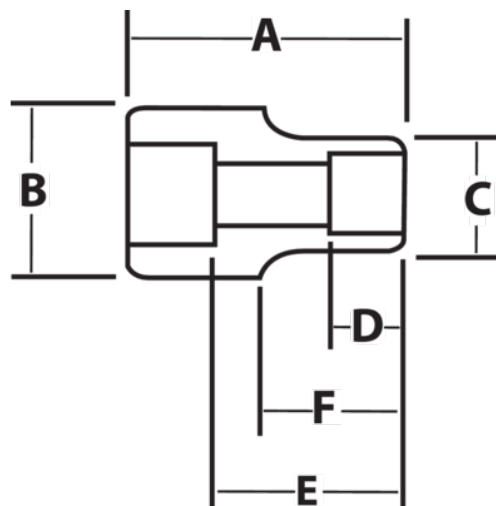
**JHW16-652**

**3/4" Drive Deep Impact Socket 6-Point 1-5/8", Black Industrial Finish**







## PRODUCT DETAILS

- SUPERTORQUE® lobular openings for greater turning power without deforming the fastener
- Designed for maximum engagement on 6 point fasteners
- Suitable for use with pneumatic and electric impact wrenches
- Specially heat treated for impact use to provide long life, safety, and durability



PRODUCT ATTRIBUTES

Product			A	B	C	D	E		F	
JHW16-652	3/4 in	1-5/8 in	3-1/2 in	1-3/4 in	2-7/16 in	15/16 in	2-17/32 in	1-5/8 in	15/16 in	2.47 lb