



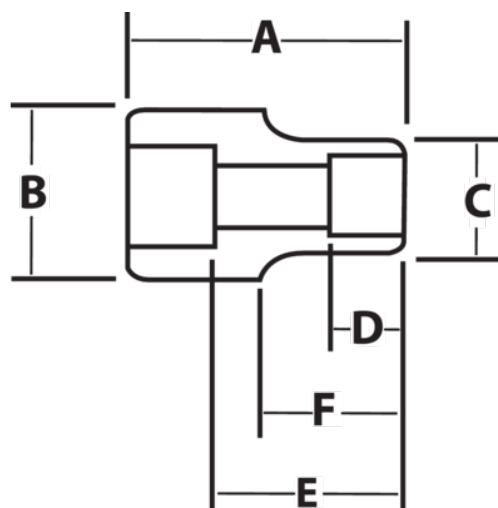
JHW6-670

**3/4" Drive Shallow Impact Socket
6-Point 2-3/16", Black Industrial
Finish**







PRODUCT DETAILS

- SUPERTORQUE™ lobular openings for greater turning power without deforming the fastener
- Designed for maximum engagement on 6 point fasteners
- Suitable for use with pneumatic and electric impact wrenches
- Specially heat treated for impact use to provide long life, safety, and durability



PRODUCT ATTRIBUTES

Product			A	B	C	D	E		F	
JHW6-670	3/4 in	2-3/16 in	3-3/16 in	1-3/4 in	3-1/16 in	1-5/16 in	2-1/16 in	2-3/16 in	2-1/2 in	2.7 lb