



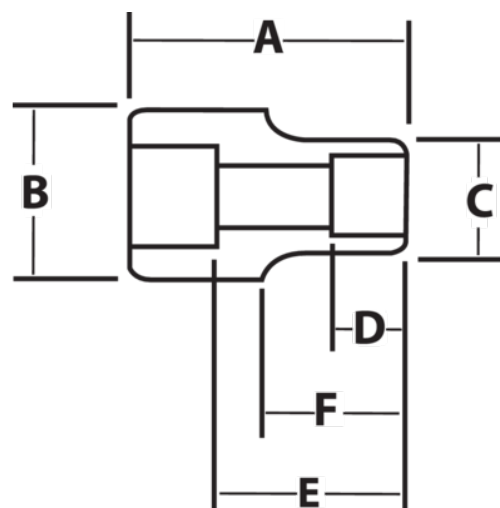
**JHW6M-1224**

**3/4 Drive Shallow Impact Sockets,  
12 Point 24 mm , Black Industrial  
Finish**







## PRODUCT DETAILS

- SUPERTORQUE® lobular openings for greater turning power without deforming the fastener
- Designed for maximum engagement on 6 and 12 point fasteners
- Suitable for use with pneumatic and electric impact wrenches
- Specially heat treated for impact use to provide long life, safety, and durability
- Drive end features pin retention hole and groove



PRODUCT ATTRIBUTES

Product			A	B	C	D	E		F	
JHW6M-1224	3/4 in	24-mm	2 in	1-5/8 in	1-1/2 in	5/8 in	1 in	3/4 in	1 in	1.62 lb