



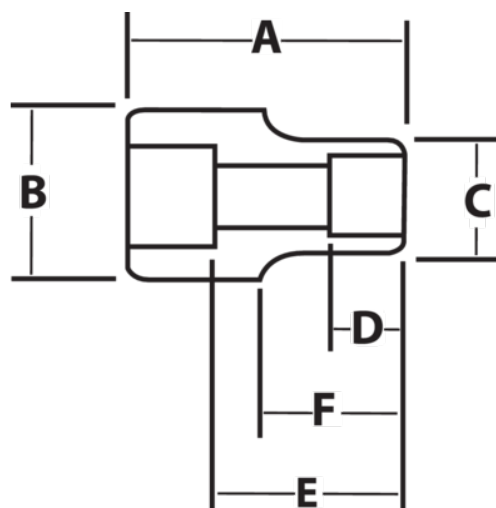
**JHW6M-630**

**3/4" Drive Shallow Impact Socket**  
**6-Point 30M, Black Industrial**  
**Finish**







## PRODUCT DETAILS

- SUPERTORQUE® lobular openings for greater turning power without deforming the fastener
- Designed for maximum engagement on 6 point fasteners
- Suitable for use with pneumatic and electric impact wrenches
- Specially heat treated for impact use to provide long life, safety, and durability
- Drive end features pin retention hole and groove



PRODUCT ATTRIBUTES

Product			A	B	C	D	E		F	
JHW6M-630	3/4 in	30-mm	2-3/32 in	1-5/8 in	1-27/32 in	47/64 in	1-1/8 in	47/64 in	1-13/32 in	0.95 lb