



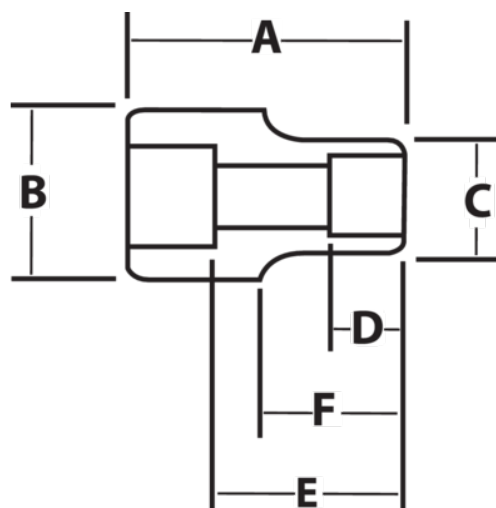
JHW6M-641

3/4" Drive Shallow Impact Socket
6-Point 41M, Black Industrial
Finish







PRODUCT DETAILS

- SUPERTORQUE® lobular openings for greater turning power without deforming the fastener
- Designed for maximum engagement on 6 point fasteners
- Suitable for use with pneumatic and electric impact wrenches
- Specially heat treated for impact use to provide long life, safety, and durability
- Drive end features pin retention hole and groove



PRODUCT ATTRIBUTES

Product			A	B	C	D	E		F	
JHW6M-641	3/4 in	41-mm	2-5/8 in	1-3/4 in	2-13/32 in	1-1/8 in	1-11/16 in	1-39/64 in	1-15/16 in	1.58 lb