



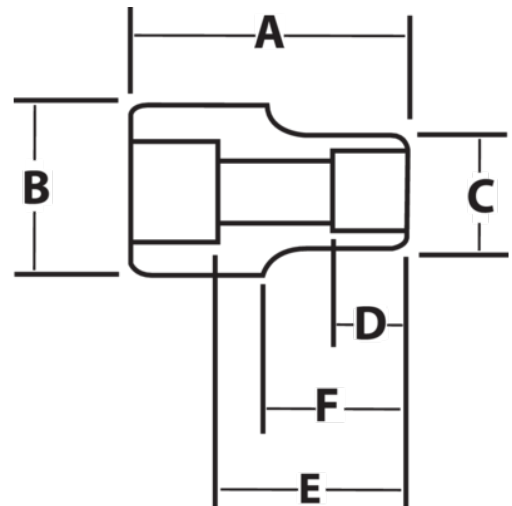
JHWX-1234

**1 Drive Shallow Socket, High
Polished Chrome Finish, 12 Point,
1-1/16**







PRODUCT DETAILS

- SUPERTORQUE® lobular openings for greater turning power without deforming the fastener
- Designed for quick engagement on both 6 and 12 point fasteners



PRODUCT ATTRIBUTES

Product			A	B	C	D	E		F	
JHWX-1234	1 in	1-1/16 in	2-1/4 in	2 in	1-5/8 in	3/4 in	1-1/16 in	13/16 in	7/8 in	1.12 lb