



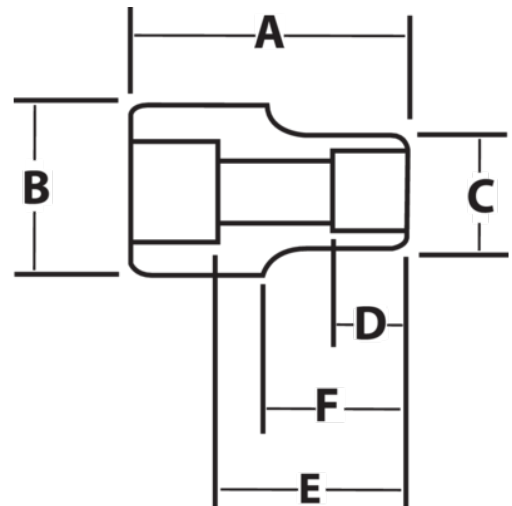
JHWX-1252

**1 Drive Shallow 12-Point Socket,
High Polished Chrome Finish,
1-1/2**







PRODUCT DETAILS

- SUPERTORQUE® lobular openings for greater turning power without deforming the fastener
- Designed for quick engagement on both 6 and 12 point fasteners



PRODUCT ATTRIBUTES

Product			A	B	C	D	E		F	
JHWX-1252	1 in	1-5/8 in	2-7/8 in	2 in	2-3/8 in	1-1/8 in	1-3/4 in	1-11/16 in	1-15/16 in	1.7 lb