



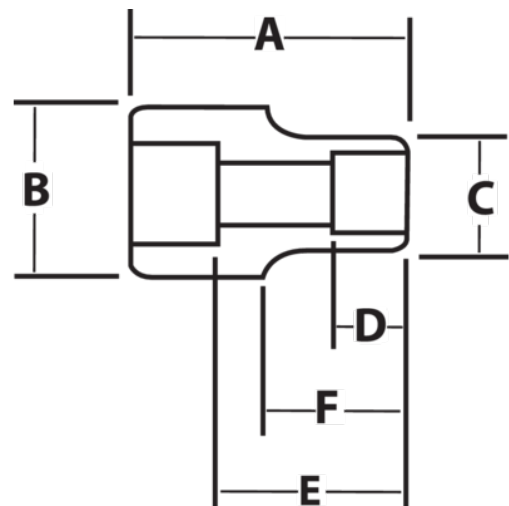
JHWX-1272

**12 Drive Shallow 12-Point Socket,
High Polished Chrome Finish,
2-3/16**







PRODUCT DETAILS

- SUPERTORQUE® lobular openings for greater turning power without deforming the fastener
- Designed for quick engagement on both 6 and 12 point fasteners



PRODUCT ATTRIBUTES

Product			A	B	C	D	E		F	
JHWX-1272	1 in	2-1/4 in	3-3/4 in	2-1/4 in	3-1/4 in	1-5/8 in	2-5/8 in	2-11/32 in	2-23/32 in	3.9 lb