

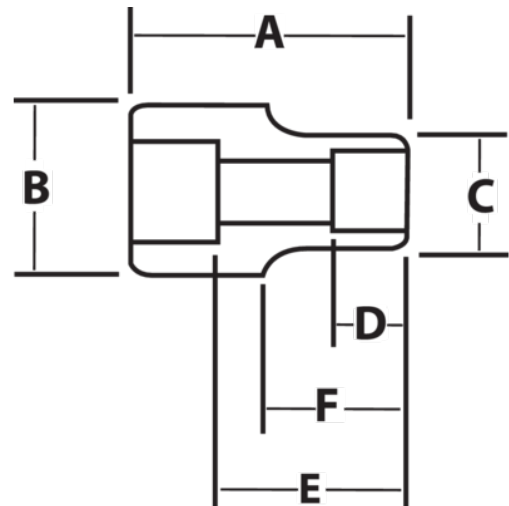


JHWX-1280
12 Drive Shallow 12-Point Socket,
High Polished Chrome Finish,
2-3/8







PRODUCT DETAILS

- SUPERTORQUE® lobular openings for greater turning power without deforming the fastener
- Designed for quick engagement on both 6 and 12 point fasteners



PRODUCT ATTRIBUTES

Product			A	B	C	D	E		F	
JHWX-1280	1 in	2-1/2 in	4-1/8 in	2-1/4 in	3-1/2 in	1-3/4 in	2-31/32 in	2-1/2 in	3-1/16 in	4.55 lb