



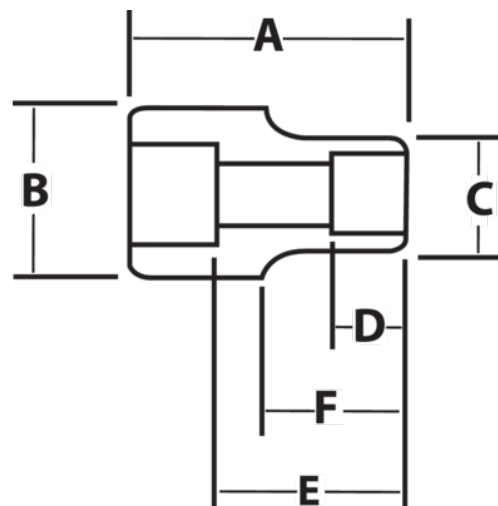
JHW17-6132

1" Drive Deep Impact Socket 6-Point 4-1/8", Black Industrial Finish







PRODUCT DETAILS

- SUPERTORQUE® lobular openings for greater turning power without deforming the fastener
- Designed for maximum engagement on 6 point fasteners
- Suitable for use with pneumatic and electric impact wrenches
- Specially heat treated for impact use to provide long life, safety, and durability



PRODUCT ATTRIBUTES

Product			A	B	C	D	E		F	
JHW17-6132	1 in	4-1/8 in	6-1/8 in	2-3/8 in	5-17/32 in	2-17/32 in	4-3/32 in	2-7/8 in	2-17/32 in	23.52 lb