



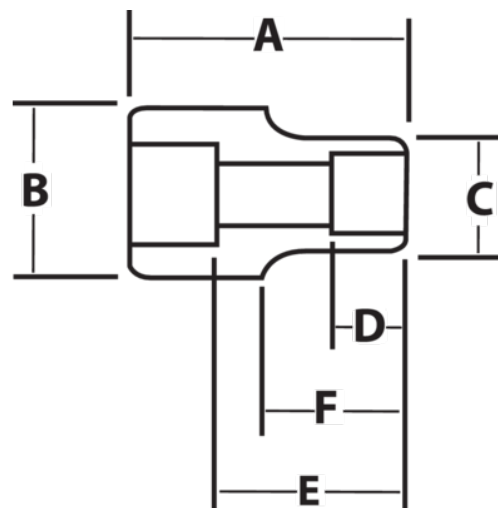
**JHW7-12124**

**1 Drive Shallow 12 Point 3 7/8"**  
**Impact Socket, Black Industrial**  
**Finish**







## PRODUCT DETAILS

- SUPERTORQUE® lobular openings for greater turning power without deforming the fastener
- Designed for maximum engagement on 6 and 12 point fasteners
- Suitable for use with pneumatic and electric impact wrenches
- Specially heat treated for impact use to provide long life, safety, and durability



PRODUCT ATTRIBUTES

Product			A	B	C	D	E		F	
JHW7-12124	1 in	3-7/8 in	5-1/2 in	2-3/8 in	5-1/4 in	2-1/2 in	3-5/8 in	3-7/8 in		12.93 lb