

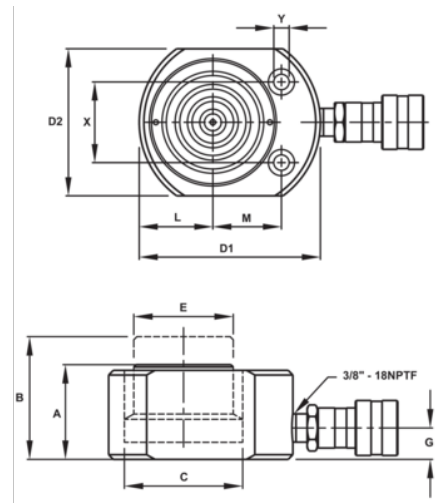


**JHW6CF10T05**  
**10T Flat Body Cylinders 3/8"**









**PRODUCT DETAILS**

- Made of high quality steel
- Extremely low collapsed height for applications with minimal clearance at the lift point
- Great for areas of low clearance
- Maximum working pressure 1, psi / 7 bar
- Flexions are designed for use on hand and power tools (Impulse or Direct drive); **NOT FOR IMPACT TOOL USE**
- Maximum working torque values: 16 Ft. Lbs. /192 In. Lbs. /217 Nm
- Other lengths and socket sizes available by special order. Contact your Williams representative



PRODUCT ATTRIBUTES

Product: **JHW6CF10T05**

	10 t		0.43 in		2.36 in
<b>PSI</b>	8470 psi		1.01 in <sup>3</sup>	<b>A</b>	1.69 in
<b>B</b>	2.12 in	<b>C</b>	1.73 in	<b>D</b>	3.3x2.2 in
<b>E</b>	1.5 in	<b>G</b>	0.77 in	<b>X</b>	1.44 in
<b>Y</b>	0.28 in		0.42 in		0.31 in
<b>L</b>	1.12 in	<b>M</b>	1.32 in	