

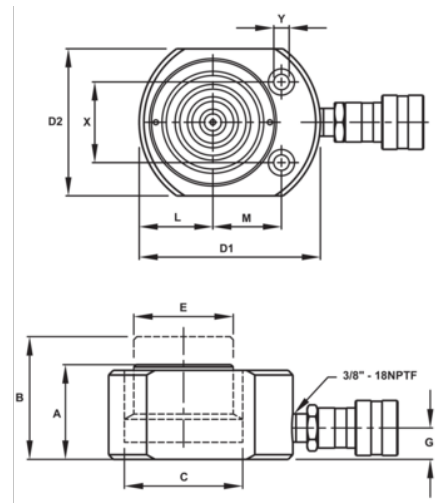


## JHW6CF20T05 20T Flat Body Cylinders 3/8"









### PRODUCT DETAILS

- Made of high quality steel
- Extremely low collapsed height for applications with minimal clearance at the lift point
- Great for areas of low clearance
- Maximum working pressure 1, psi / 7 bar
- Flexions are designed for use on hand and power tools (Impulse or Direct drive); NOT FOR IMPACT TOOL USE
- Maximum working torque values: 16 Ft. Lbs. /192 In. Lbs. /217 Nm
- Other lengths and socket sizes available by special order. Contact your Williams representative



PRODUCT ATTRIBUTES

Product: **JHW6CF20T05**

	20 t		0.43 in		4.38 in
<b>PSI</b>	9130 psi		1.88 in <sup>3</sup>	<b>A</b>	2.01 in
<b>B</b>	2.44 in	<b>C</b>	2.36 in	<b>D</b>	4.0x3.0 in
<b>E</b>	2 in	<b>G</b>	0.75 in	<b>X</b>	1.94 in
<b>Y</b>	0.4 in		0.59 in		0.39 in
<b>L</b>	1.54 in	<b>M</b>	1.56 in	