

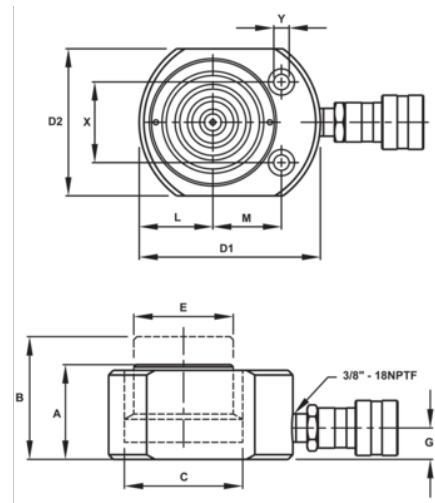


**JHW6CF30T05**  
**30T Flat Body Cylinders 3/8"**









**PRODUCT DETAILS**

- Made of high quality steel
- Extremely low collapsed height for applications with minimal clearance at the lift point
- Great for areas of low clearance
- Maximum working pressure 1, psi / 7 bar
- Flextions are designed for use on hand and power tools (Impulse or Direct drive); **NOT FOR IMPACT TOOL USE**
- Maximum working torque values: 16 Ft. Lbs. /192 In. Lbs. /217 Nm
- Other lengths and socket sizes available by special order. Contact your Williams representative



PRODUCT ATTRIBUTES

Product: **JHW6CF30T05**

	30 t		0.51 in		6.49 in
<b>PSI</b>	9240 psi		3.31 in <sup>3</sup>	<b>A</b>	2.31 in
<b>B</b>	2.82 in	<b>C</b>	2.87 in	<b>D</b>	4.6x3.8 in
<b>E</b>	2.5 in	<b>G</b>	0.79 in	<b>X</b>	2.06 in
<b>Y</b>	0.4 in		0.62 in		0.44 in
<b>L</b>	1.88 in	<b>M</b>	1.75 in	