

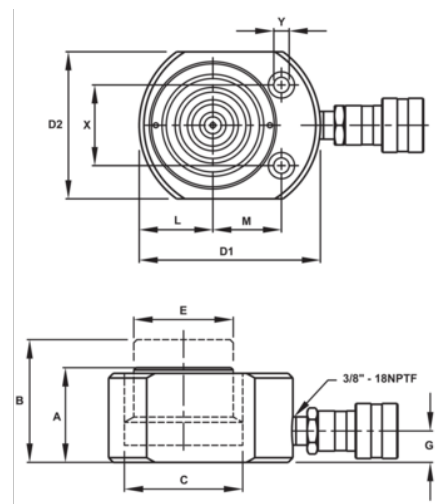


JHW6CF50T05 50 Ton Flat Body Cylinder








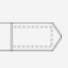
PRODUCT DETAILS

- Made of high quality steel
- Extremely low collapsed height for applications with minimal clearance at the lift point
- Great for areas of low clearance
- Maximum working pressure 1, psi / 7 bar
- Flextions are designed for use on hand and power tools (Impulse or Direct drive); NOT FOR IMPACT TOOL USE
- Maximum working torque values: 16 Ft. Lbs. /192 In. Lbs. /217 Nm
- Other lengths and socket sizes available by special order. Contact your Williams representative



PRODUCT ATTRIBUTES

Product: **JHW6CF50T05**

	50 t		0.63 in		9.86 in
PSI	10140 psi		6.21 in ³	A	2.64 in
B	3.27 in	C	3.54 in	D	4.5x4.5 in
E	2.76 in	G	0.79 in	X	2.62 in
Y	0.43 in		0.75 in		0.5 in
L	2.25 in	M	2.13 in	