

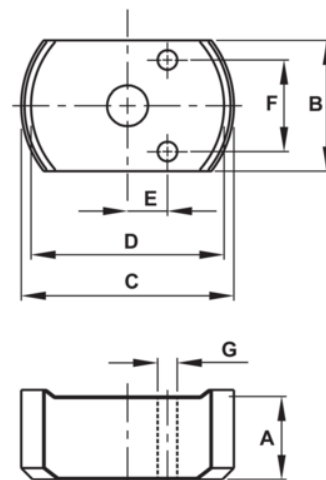


JH6CF05T03TB 5T Flat Body Cylinders Kit








PRODUCT DETAILS

- Various height magnetic adapters
- Perfect for low clearance areas needing a cylinder height boost
- Maximum working pressure: 10,000 psi / 700 bar
- Kits include magnetic adapters and carrying case



PRODUCT ATTRIBUTES

Product: **JH6CF05T03TB**

	5 t		0.24 in		0.26 in ³
A	1.26 in		I, II, III, IV		0.25 X 0.5 X 1 X 1.25 in
B	1.61 in	C	2.56 in	E	0.48 in
F	1.1 in	G	0.24 in		