

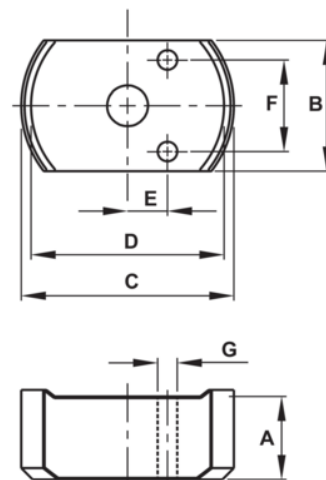


## JH6CF10T05TB 10T Flat Body Cylinders Kit








### PRODUCT DETAILS

- Various height magnetic adapters
- Perfect for low clearance areas needing a cylinder height boost
- Maximum working pressure: 10,000 psi / 700 bar
- Kits include magnetic adapters and carrying case



PRODUCT ATTRIBUTES

Product: **JH6CF10T05TB**

|   |         |   |            |   |                       |
|---|---------|---|------------|---|-----------------------|
|  | 10 t    |  | 0.43 in    |  | 1.02 in <sup>3</sup>  |
| <b>A</b>  | 1.69 in |  | I, II, III |  | 0.39 X 0.79 X 1.57 in |
| <b>B</b>  | 2.2 in  | <b>C</b>  | 3.54 in    | <b>E</b>  | 0.81 in               |
| <b>F</b>  | 1.46 in | <b>G</b>  | 0.28 in    |   |                       |