

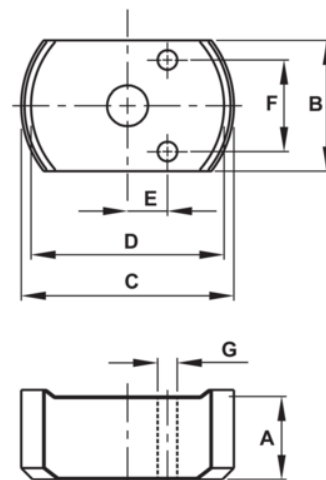


JH6CF20T05TB 20T Flat Body Cylinderskit








PRODUCT DETAILS

- Various height magnetic adapters
- Perfect for low clearance areas needing a cylinder height boost
- Maximum working pressure: 10,000 psi / 700 bar
- Kits include magnetic adapters and carrying case



PRODUCT ATTRIBUTES

Product: **JH6CF20T05TB**

	20 t		0.43 in		1.90 in ³
A	2.01 in		I, II, III		0.39 X 0.79 X 1.57 in
B	2.99 in	C	4.25 in	E	1.08 in
F	1.93 in	G	0.39 in		