

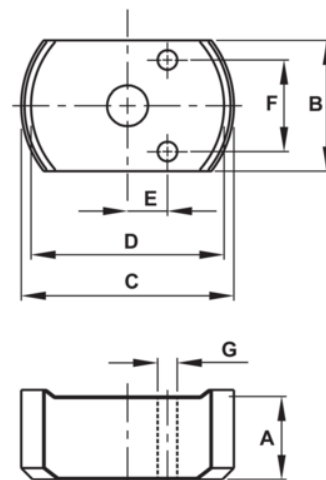


JH6CF30T05TB 30T Flat Body Cylinders Kit








PRODUCT DETAILS

- Various height magnetic adapters
- Perfect for low clearance areas needing a cylinder height boost
- Maximum working pressure: 10,000 psi / 700 bar
- Kits include magnetic adapters and carrying case



PRODUCT ATTRIBUTES

Product: **JH6CF30T05TB**

	30 t		0.51 in		3.32 in ³
A	2.31 in		I, II, III		0.39 X 0.79 X 1.57 in
B	3.75 in	C	4.76 in	E	1.32 in
F	2.06 in	G	0.39 in		