

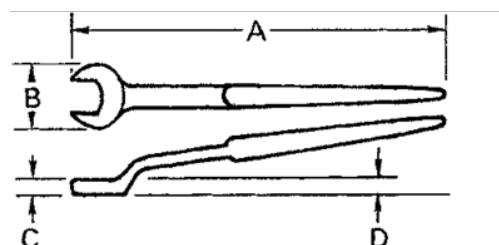


JHW1910-TH
1-5/8 Open End Spud Wrench with
Safety Ring





PRODUCT DETAILS

- Tools complete with Tools@Height attachment Point
- Long offset handle is designed for clearance of obstructions while providing greater leverage
- Tapered spud handle locates and aligns bolt and rivet holes



PRODUCT ATTRIBUTES

Product		A	B	C	D	
JHW1910-TH	1-5/8 in	21-1/16 in	3-7/32 in	7/8 in	1-1/2 in	4.16 lb