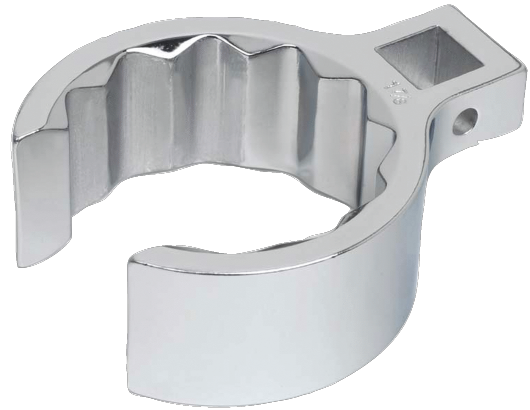


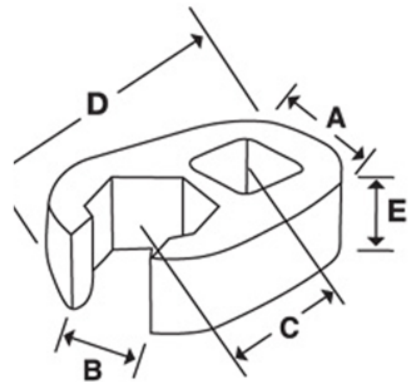


SCF36 - SCF64
1/2" Drive Crowfoot Wrench, Flare
Nut, 12 Point






PRODUCT DETAILS

- All tools are professional quality, made of high grade steel
- High-polished chrome finish cleans easily



PRODUCT ATTRIBUTES

Product			C	A	E	B	
JHWSCF38	1/2 in	1-3/16 in	1-3/16 in	1-11/16 in	7/8 in	27/32 in	0.27 lb
JHWSCF42	1/2 in	1-5/16 in	1-17/64 in	1-27/32 in	7/8 in	31/32 in	0.3 lb
JHWSCF46	1/2 in	1-7/16 in	1-11/32 in	2 in	15/16 in	1-1/16 in	0.3 lb
JHWSCF50	1/2 in	1-9/16 in	1-27/64 in	2-5/32 in	15/16 in	1-5/32 in	0.35 lb
JHWSCF52	1/2 in	1-5/8 in	1-29/64 in	2-7/32 in	15/16 in	1-7/32 in	0.38 lb
JHWSCF54	1/2 in	1-11/16 in	1-33/64 in	2-5/16 in	1 in	1-5/16 in	0.44 lb
JHWSCF56	1/2 in	1-3/4 in	1-35/64 in	2-3/8 in	1 in	1-5/16 in	0.45 lb
JHWSCF58	1/2 in	1-13/16 in	1-19/32 in	2-15/32 in	1 in	1-11/32 in	0.49 lb
JHWSCF60	1/2 in	1-7/8 in	1-41/64 in	2-9/16 in	1-1/16 in	1-3/8 in	0.58 lb
JHWSCF62	1/2 in	1-15/16 in	1-43/64 in	2-1/2 in	1-1/16 in	1-7/16 in	0.53 lb
JHWSCF64	1/2 in	2 in	1-23/32 in	2-23/32 in	1-1/16 in	1-9/16 in	0.56 lb