

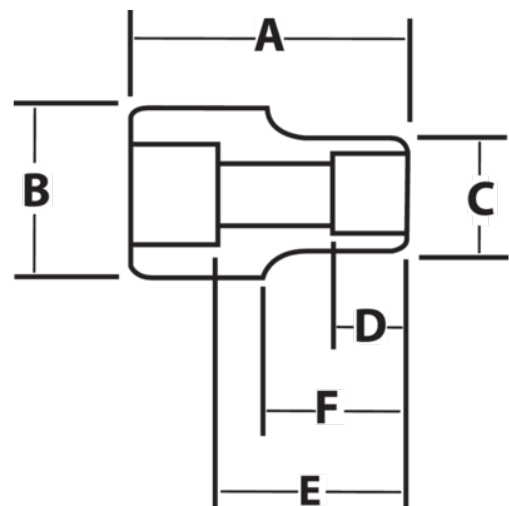


6M-1219 -6M-1250
3/4" Drive Shallow Impact
Sockets, 12 Point, Metric







PRODUCT DETAILS

- SUPERTORQUE® lobular openings for greater turning power without deforming the fastener
- Designed for maximum engagement on 6 and 12 point fasteners
- Suitable for use with pneumatic and electric impact wrenches
- Specially heat treated for impact use to provide long life, safety, and durability
- Drive end features pin retention hole and groove



PRODUCT ATTRIBUTES

Product			A	B	C	D	E		F	
JHW6M-1219	3/4 in	19-mm	2 in	1-5/8 in	1-1/4 in	1/2 in	1 in	2/3 in	1 in	0.64 lb
JHW6M-1220	3/4 in	20-mm	2 in	1-5/8 in	1-3/8 in	1/2 in	1 in	2/3 in	1 in	0.69 lb
JHW6M-1221	3/4 in	21-mm	2 in	1-5/8 in	1-3/8 in	1/2 in	1 in	2/3 in	1 in	0.68 lb
JHW6M-1222	3/4 in	22-mm	2 in	1-5/8 in	1-1/2 in	1/2 in	1 in	2/3 in	1 in	0.69 lb
JHW6M-1223	3/4 in	23-mm	2 in	1-5/8 in	1-1/2 in	5/8 in	1 in	2/3 in	1 in	0.68 lb
JHW6M-1224	3/4 in	24-mm	2 in	1-5/8 in	1-1/2 in	5/8 in	1 in	3/4 in	1 in	1.62 lb
JHW6M-1225	3/4 in	25-mm	2 in	1-5/8 in	1-1/2 in	11/16 in	1 in	3/4 in	1 in	0.72 lb
JHW6M-1226	3/4 in	26-mm	2 in	1-5/8 in	1-1/2 in	11/16 in	1 in	3/4 in	1 in	0.7 lb
JHW6M-1227	3/4 in	27-mm	2 in	1-5/8 in	1-5/8 in	11/16 in	1 in	1 in		0.74 lb
JHW6M-1228	3/4 in	28-mm	2-1/4 in	1-5/8 in	1-3/4 in	11/16 in	1-3/8 in	1 in		0.9 lb
JHW6M-1229	3/4 in	29-mm	2-1/4 in	1-5/8 in	1-3/4 in	11/16 in	1-3/8 in	1 in		0.94 lb
JHW6M-1230	3/4 in	30-mm	2-1/4 in	1-5/8 in	1-3/4 in	3/4 in	1-3/8 in	1 in		0.92 lb
JHW6M-1231	3/4 in	31-mm	2-1/4 in	1-5/8 in	2 in	3/4 in	1-1/4 in	1-1/4 in		1.03 lb
JHW6M-1232	3/4 in	32-mm	2-1/4 in	1-3/4 in	2 in	13/16 in	1-1/4 in	1-1/4 in		1.13 lb
JHW6M-1233	3/4 in	33-mm	2-1/4 in	1-3/4 in	2 in	13/16 in	1-1/4 in	1-1/4 in		1.11 lb
JHW6M-1234	3/4 in	34-mm	2-1/4 in	1-3/4 in	2 in	7/8 in	1-1/4 in	1-1/4 in		1.08 lb
JHW6M-1235	3/4 in	35-mm	2-1/4 in	1-3/4 in	2-1/8 in	7/8 in	1-1/4 in	1-1/4 in		1.22 lb
JHW6M-1236	3/4 in	36-mm	2-1/4 in	1-3/4 in	2-1/8 in	7/8 in	1-1/4 in	1-1/2 in		1.18 lb
JHW6M-1238	3/4 in	38-mm	2-1/4 in	1-3/4 in	2-3/16 in	1 in	1-1/4 in	1-1/2 in		1.17 lb
JHW6M-1240	3/4 in	40-mm	2-1/2 in	1-3/4 in	2-3/8 in	1-1/8 in	1-7/16 in	1-1/2 in		1.51 lb
JHW6M-1241	3/4 in	41-mm	2-1/2 in	1-3/4 in	2-3/8 in	1-1/8 in	1-7/16 in	1-1/2 in		1.47 lb
JHW6M-1242	3/4 in	42-mm	2-1/2 in	1-3/4 in	2-3/8 in	1-1/8 in	1-3/8 in	1-1/2 in		1.53 lb
JHW6M-1243	3/4 in	43-mm	2-1/2 in	1-3/4 in	2-1/2 in	1-1/8 in	1-3/8 in	1-3/4 in		1.68 lb
JHW6M-1244	3/4 in	44-mm	2-1/2 in	1-3/4 in	2-1/2 in	1-1/8 in	1-3/8 in	1-3/4 in		1.07 lb
JHW6M-1246	3/4 in	46-mm	2-3/4 in	1-3/4 in	2-5/8 in	1-1/8 in	1-1/2 in	1-3/4 in		1.9 lb
JHW6M-1250	3/4 in	50-mm	2-3/4 in	1-3/4 in	2-5/8 in	1-1/8 in	1-1/2 in	2 in		1.75 lb