

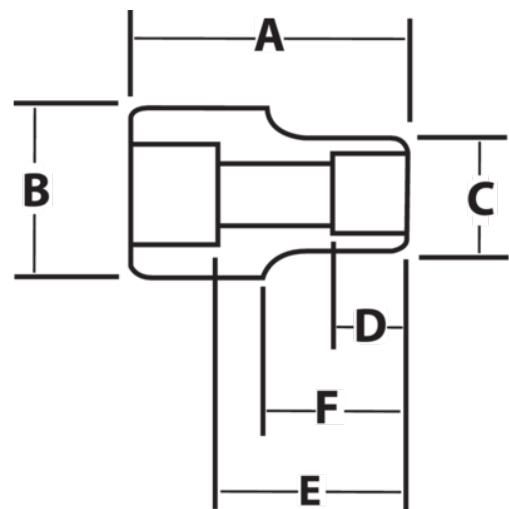


**6M-617A - 6M-646**  
**3/4" Drive Shallow Impact**  
**Sockets, 6 Point, Metric**







## PRODUCT DETAILS

- SUPERTORQUE® lobular openings for greater turning power without deforming the fastener
- Designed for maximum engagement on 6 point fasteners
- Suitable for use with pneumatic and electric impact wrenches
- Specially heat treated for impact use to provide long life, safety, and durability
- Drive end features pin retention hole and groove



## PRODUCT ATTRIBUTES

Product			<b>A</b>	<b>B</b>	<b>C</b>	<b>D</b>	<b>E</b>		<b>F</b>	
<b>JHW6M-617A</b>	3/4 in	17-mm	2 in	1-5/8 in	1-5/32 in	17/32 in	1-1/32 in	1/2 in	1 in	0.63 lb
<b>JHW6M-619A</b>	3/4 in	19-mm	2 in	1-5/8 in	1-1/4 in	17/32 in	1-1/32 in	11/16 in	1 in	0.64 lb
<b>JHW6M-620A</b>	3/4 in	20-mm	2 in	1-5/8 in	1-3/8 in	35/64 in	1-1/32 in	11/16 in	1 in	0.69 lb
<b>JHW6M-622A</b>	3/4 in	22-mm	2 in	1-5/8 in	1-1/2 in	19/32 in	1-1/32 in	11/16 in	1 in	0.74 lb
<b>JHW6M-624A</b>	3/4 in	24-mm	2 in	1-5/8 in	1-35/64 in	11/32 in	1-1/32 in	11/16 in	1 in	0.68 lb
<b>JHW6M-627A</b>	3/4 in	27-mm	2 in	1-5/8 in	1-11/16 in	3/4 in	1-1/32 in	1-1/16 in	1-5/16 in	0.7 lb
<b>JHW6M-630</b>	3/4 in	30-mm	2-3/32 in	1-5/8 in	1-27/32 in	47/64 in	1-1/8 in	47/64 in	1-13/32 in	0.95 lb
<b>JHW6M-631</b>	3/4 in	31-mm	2-1/8 in	1-5/8 in	1-15/16 in	3/4 in	1-3/16 in	1-7/32 in	1-7/16 in	1.1 lb
<b>JHW6M-632</b>	3/4 in	32-mm	2-1/8 in	1-3/4 in	2 in	13/16 in	1-3/16 in	1-1/4 in	1-7/16 in	1.04 lb
<b>JHW6M-634</b>	3/4 in	34-mm	2-1/8 in	1-3/4 in	2 in	7/8 in	1-3/16 in	1-21/64 in	1-7/16 in	0.99 lb
<b>JHW6M-635</b>	3/4 in	35-mm	2-1/4 in	1-3/4 in	2-1/8 in	7/8 in	1-5/16 in	1-3/8 in	1-9/16 in	1.26 lb
<b>JHW6M-636</b>	3/4 in	36-mm	2-1/4 in	1-3/4 in	2-1/8 in	7/8 in	1-5/16 in	1-13/32 in	1-9/16 in	1.36 lb
<b>JHW6M-638</b>	3/4 in	38-mm	2-1/4 in	1-3/4 in	2-1/4 in	15/16 in	1-5/16 in	1-1/2 in	1-9/16 in	1.24 lb
<b>JHW6M-641</b>	3/4 in	41-mm	2-5/8 in	1-3/4 in	2-13/32 in	1-1/8 in	1-11/16 in	1-39/64 in	1-15/16 in	1.58 lb
<b>JHW6M-646</b>	3/4 in	46-mm	2-5/8 in	1-3/4 in	2-19/32 in	1-1/8 in	1-21/32 in	1-13/16 in	1-15/16 in	1.96 lb