



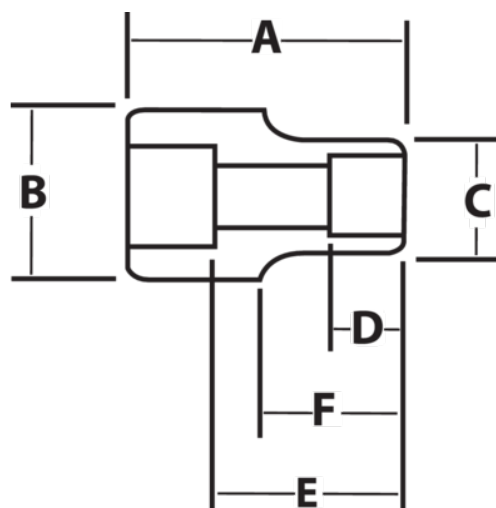
41144 - 41228

**1-1/2" Drive Shallow Impact
Sockets, 12 Point, SAE**







PRODUCT DETAILS

- SUPERTORQUE® lobular openings for greater turning power without deforming the fastener
- Designed for maximum engagement on 6 and 12 point fasteners
- Suitable for use with pneumatic and electric impact wrenches
- Specially heat treated for impact use to provide long life, safety, and durability



PRODUCT ATTRIBUTES

Product			A	B	C	D	E		F	
JHW41144	1-1/2 in	1-3/8 in	3-1/8 in	3-3/8 in	2-1/2 in	1 in		1-3/16 in	1-3/8 in	4.54 lb
JHW41146	1-1/2 in	1-7/16 in	3-1/8 in	3-3/8 in	2-1/2 in	1 in		1-1/4 in	1-3/8 in	4.6 lb
JHW41148	1-1/2 in	1-1/2 in	3-1/8 in	3-3/8 in	2-5/8 in	1 in		1-1/4 in	1-3/8 in	4.55 lb
JHW41150	1-1/2 in	1-9/16 in	3-1/8 in	3-3/8 in	2-5/8 in	1 in		1-3/8 in	1-3/8 in	4.6 lb
JHW41152	1-1/2 in	1-5/8 in	3-1/8 in	3-3/8 in	2-3/4 in	1 in		1-3/8 in	1-3/8 in	4.64 lb
JHW41154	1-1/2 in	1-11/16 in	3-1/4 in	3-3/8 in	2-3/4 in	1-1/16 in		1-1/2 in	1-1/2 in	4.89 lb
JHW41156	1-1/2 in	1-3/4 in	3-1/4 in	3-3/8 in	2-15/16 in	1-1/16 in		1-1/2 in	1-1/2 in	4.92 lb
JHW41158	1-1/2 in	1-13/16 in	3-1/4 in	3-3/8 in	2-15/16 in	1-1/16 in		1-5/8 in	1-1/2 in	4.97 lb
JHW41160	1-1/2 in	1-7/8 in	3-7/16 in	3-3/8 in	3-1/8 in	1-3/16 in		1-5/8 in	1-5/8 in	5.2 lb
JHW41162	1-1/2 in	1-15/16 in	3-7/16 in	3-3/8 in	3-1/8 in	1-3/16 in		1-3/4 in	1-5/8 in	5.24 lb
JHW41164	1-1/2 in	2 in	3-7/16 in	3-3/8 in	3-1/4 in	1-3/16 in		1-3/4 in	1-5/8 in	5.32 lb
JHW41166	1-1/2 in	2-1/16 in	3-7/16 in	3-3/8 in	3-1/4 in	1-3/16 in		1-7/8 in	1-5/8 in	5.3 lb
JHW41168	1-1/2 in	2-1/8 in	3-1/2 in	3-3/8 in	3-3/8 in	1-1/2 in		1-7/8 in		5.6 lb
JHW41170	1-1/2 in	2-3/16 in	3-1/2 in	3-3/8 in	3-3/8 in	1-1/2 in		1-7/8 in		5.43 lb
JHW41172	1-1/2 in	2-1/4 in	3-1/2 in	3-3/8 in	3-5/8 in	1-1/2 in		2-1/16 in	1-3/4 in	6.05 lb
JHW41174	1-1/2 in	2-5/16 in	3-1/2 in	3-3/8 in	3-5/8 in	1-1/2 in		2-1/16 in	1-3/4 in	5.94 lb
JHW41176	1-1/2 in	2-3/8 in	3-1/2 in	3-3/8 in	3-5/8 in	1-1/2 in		2-1/16 in	1-3/4 in	5.83 lb
JHW41178	1-1/2 in	2-7/16 in	3-3/4 in	3-3/8 in	3-7/8 in	1-5/8 in		2/14 in	1-3/4 in	6.73 lb
JHW41180	1-1/2 in	2-1/2 in	3-3/4 in	3-3/8 in	3-7/8 in	1-5/8 in		2/14 in	1-3/4 in	6.57 lb
JHW41182	1-1/2 in	2-9/16 in	3-3/4 in	3-3/8 in	3-7/8 in	1-5/8 in		2/14 in	1-3/4 in	6.45 lb
JHW41184	1-1/2 in	2-5/8 in	3-3/4 in	3-3/8 in	4-3/16 in	1-5/8 in		2-7/16 in	1-3/4 in	7.42 lb
JHW41186	1-1/2 in	2-11/16 in	3-3/4 in	3-3/8 in	4-3/16 in	1-5/8 in		2-7/16 in	1-3/4 in	7.23 lb
JHW41188	1-1/2 in	2-3/4 in	3-3/4 in	3-3/8 in	4-3/16 in	1-5/8 in		2-1/2 in	1-3/4 in	7.15 lb
JHW41190	1-1/2 in	2-13/16 in	4-1/16 in	3-3/8 in	4-1/4 in	1-3/4 in		2-1/2 in	1-3/4 in	7.95 lb
JHW41192	1-1/2 in	2-7/8 in	4-1/16 in	3-3/8 in	4-1/4 in	1-3/4 in		2-5/8 in	1-3/4 in	7.74 lb
JHW41194	1-1/2 in	2-15/16 in	4-1/16 in	3-3/8 in	4-1/4 in	1-3/4 in		2-5/8 in	1-3/4 in	7.55 lb
JHW41196	1-1/2 in	3 in	4-1/4 in	3-3/8 in	4-5/8 in	2 in		2-3/4 in	1-3/4 in	10.06 lb
JHW41200	1-1/2 in	3-1/8 in	4-1/4 in	3-3/8 in	4-5/8 in	2 in		2-3/4 in	1-3/4 in	9.62 lb
JHW41204	1-1/2 in	3-1/4 in	4-1/4 in	3-3/8 in	4-15/16 in	2 in		3 in	1-3/4 in	10.78 lb
JHW41208	1-1/2 in	3-3/8 in	4-1/4 in	3-3/8 in	4-15/16 in	2 in		3 in	1-3/4 in	10.25 lb
JHW41212	1-1/2 in	3-1/2 in	4-5/8 in	3-3/8 in	5 in	2-3/16 in		3-1/4 in	1-3/4 in	11.25 lb
JHW41220	1-1/2 in	3-3/4 in	4-5/8 in	3-3/4 in	5-1/4 in	2-3/16 in		3-1/2 in	2 in	11.93 lb
JHW41224	1-1/2 in	3-7/8 in	4-15/16 in	3-3/4 in	5-7/16 in	2-1/4 in		3-5/8 in	2 in	13.12 lb
JHW41226	1-1/2 in	3-15/16 in	4-15/16 in	3-3/4 in	5-7/16 in	2-1/4 in		3-5/8 in	2 in	12.84 lb