

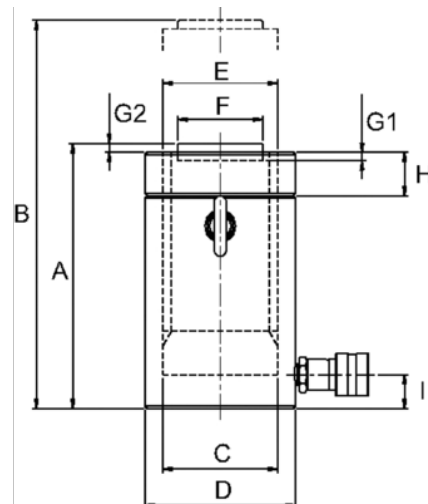


6CN Lock Nut Cylinders



PRODUCT DETAILS

- Single acting cylinder with mechanical safety lock nut
- Designed to support load for extended periods without hydraulic pressure
- Overflow port prevents cylinders from over travel
- Load return
- Solid steel cylinder body
- Ideal for lifting and holding loads



PRODUCT ATTRIBUTES

Product: **JHW6CN55T02**

	55 t		1.97 in		10.99 in
	21.65 in ³	A	6.5 in	B	8.4 in
C	3.7 in	D	4.9 in	F	2.8 in
lb	34 lb		Tw95-6N	G1	0.08 in
G2	0.51 in	H	1.4 in	I	1.1 in

Product: **JHW6CN55T04**

	55 t		3.94 in		10.99 in
	43.27 in ³	A	8.4 in	B	12.4 in
C	3.7 in	D	4.9 in	F	2.8 in
lb	44.5 lb		Tw95-6N	G1	0.08 in
G2	0.51 in	H	1.4 in	I	1.1 in

Product: **JHW6CN55T06**

	55 t		5.91 in		10.99 in
	64.9 in ³	A	10.4 in	B	16.3 in
C	3.7 in	D	4.9 in	F	2.8 in
lb	55.1 lb		Tw95-6N	G1	0.08 in
G2	0.51 in	H	1.4 in	I	1.1 in

Product: **JHW6CN55T08**

	55 t		7.87 in		10.99 in
	86.54 in ³	A	12.4 in	B	20.2 in
C	3.7 in	D	4.9 in	F	2.8 in
lb	65.9 lb		Tw95-6N	G1	0.08 in
G2	0.51 in	H	1.4 in	I	1.1 in

Product: **JHW6CN55T10**

	55 t		9.84 in		10.99 in
	108.17 in ³	A	14.3 in	B	24.2 in
C	3.7 in	D	4.9 in	F	2.8 in
lb	76.5 lb		Tw95-6N	G1	0.08 in
G2	0.51 in	H	1.4 in	I	1.1 in

Product: **JHW6CN55T12**

	55 t		11.81 in		10.99 in
	129.8 in ³	A	16.3 in	B	28.1 in
C	3.7 in	D	4.9 in	F	2.8 in
lb	87.1 lb		Tw95-6N	G1	0.08 in
G2	0.51 in	H	1.4 in	I	1.1 in

Product: **JHW6CN100T02**

	100 t		1.97 in		20.57 in
	40.49 in ³	A	7.4 in	B	9.3 in
C	5.1 in	D	6.5 in	F	2.8 in
lb	67.2 lb		Tw130-4N	G1	0.08 in
G2	0.51 in	H	1.8 in	I	1.1 in

Product: **JHW6CN100T04**

	100 t		3.94 in		20.57 in
	80.98 in ³	A	9.3 in	B	13.3 in
C	5.1 in	D	6.5 in	F	2.8 in
lb	85.8 lb		Tw130-4N	G1	0.08 in
G2	0.51 in	H	1.8 in	I	1.1 in

Product: **JHW6CN100T06**

	100 t		5.91 in		20.57 in
	121.48 in ³	A	11.3 in	B	17.2 in
C	5.1 in	D	6.5 in	F	2.8 in
lb	104.3 lb		Tw130-4N	G1	0.08 in
G2	0.51 in	H	1.8 in	I	1.1 in

Product: **JHW6CN100T08**

	100 t		7.87 in		20.57 in
	161.97 in ³	A	13.3 in	B	21.1 in
C	5.1 in	D	6.5 in	F	2.8 in
lb	122.6 lb		Tw130-4N	G1	0.08 in
G2	0.51 in	H	1.8 in	I	1.1 in

Product: **JHW6CN100T10**

	100 t		9.84 in		20.57 in
	202.46 in ³	A	15.2 in	B	25.1 in
C	5.1 in	D	6.5 in	F	2.8 in
lb	141.1 lb		Tw130-4N	G1	0.08 in
G2	0.51 in	H	1.8 in	I	1.1 in

Product: **JHW6CN100T12**

	100 t		11.81 in		20.57 in
	242.95 in ³	A	17.2 in	B	29 in
C	5.1 in	D	6.5 in	F	2.8 in
lb	159.6 lb		Tw130-4N	G1	0.08 in
G2	0.51 in	H	1.8 in	I	1.1 in