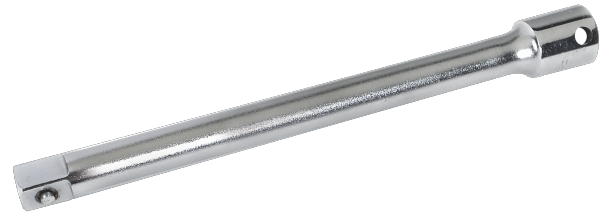


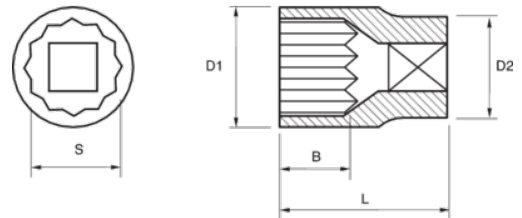


M-1
1/4" Drive Extensions with 4 Hole
Solution



PRODUCT DETAILS

- Tools complete with Tools@Height attachment Point
- Chrome plating provides increased protection from rust and corrosion
- Flexible extension is designed for low torque applications in limited access areas
- Ball and spring socket retention



PRODUCT ATTRIBUTES

Product				A	lb	
JHWM-102-TH		1/4 in	2 in		0.06 lb	1/4 in
JHWM-104-TH		1/4 in	4 in		0.11 lb	1/4 in
JHWM-115-TH		1/4 in	6 in		0.15 lb	1/4 in