

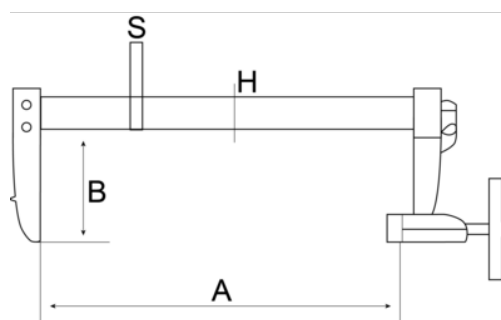


420SH-120-1250
F-Clamp with Rubberised Handle
1250 mm x 120 mm




PRODUCT DETAILS

- Specially designed handle for heavy-duty use and soft feel
- Capacity 50 mm to 175 mm
- Tough and weather-resistant
- Zinc finished screw with special, plastic covered ball-swivel foot for secure and easy clamping of odd shapes
- High quality plastic caps for protection of clamped pieces
- Professional F clamp with one fixed and one sliding bracket fitted to a galvanised profiled steel rail
- Flag in a resistant plastic to include product data



PRODUCT ATTRIBUTES

Product	A	B	H	S	
420SH-120-1250	1250 mm	120 mm	35 mm	11 mm	3285 g